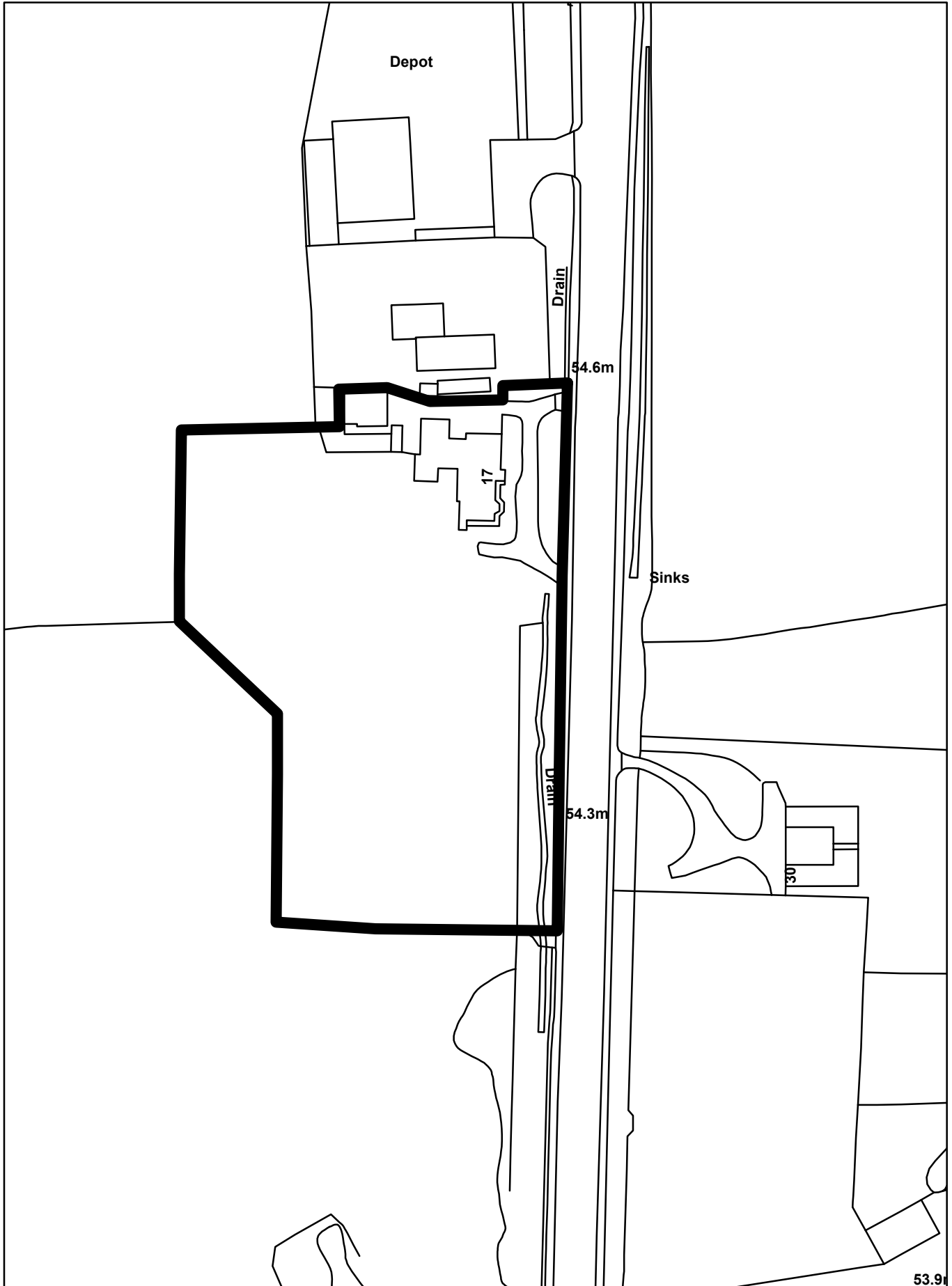
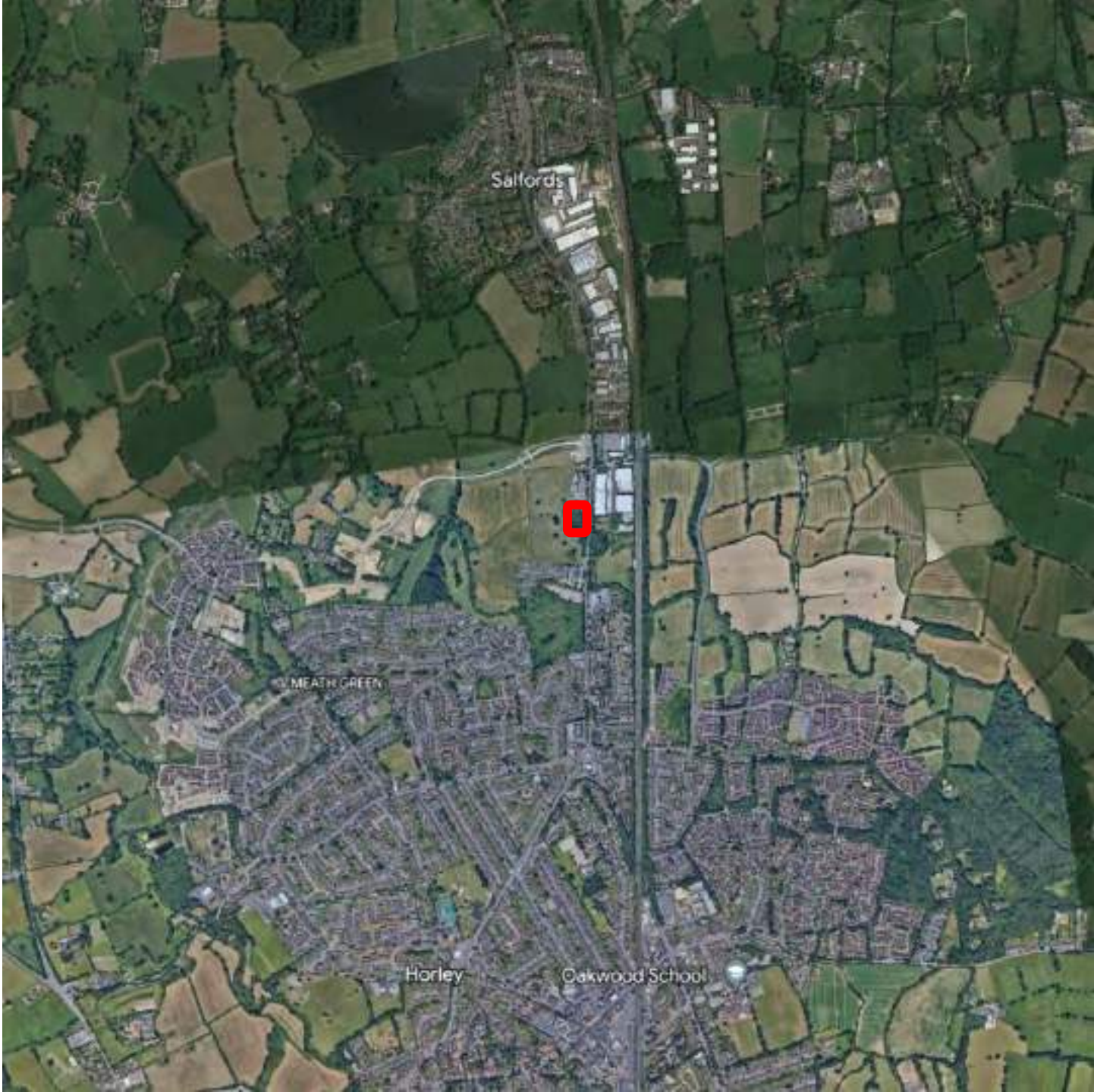
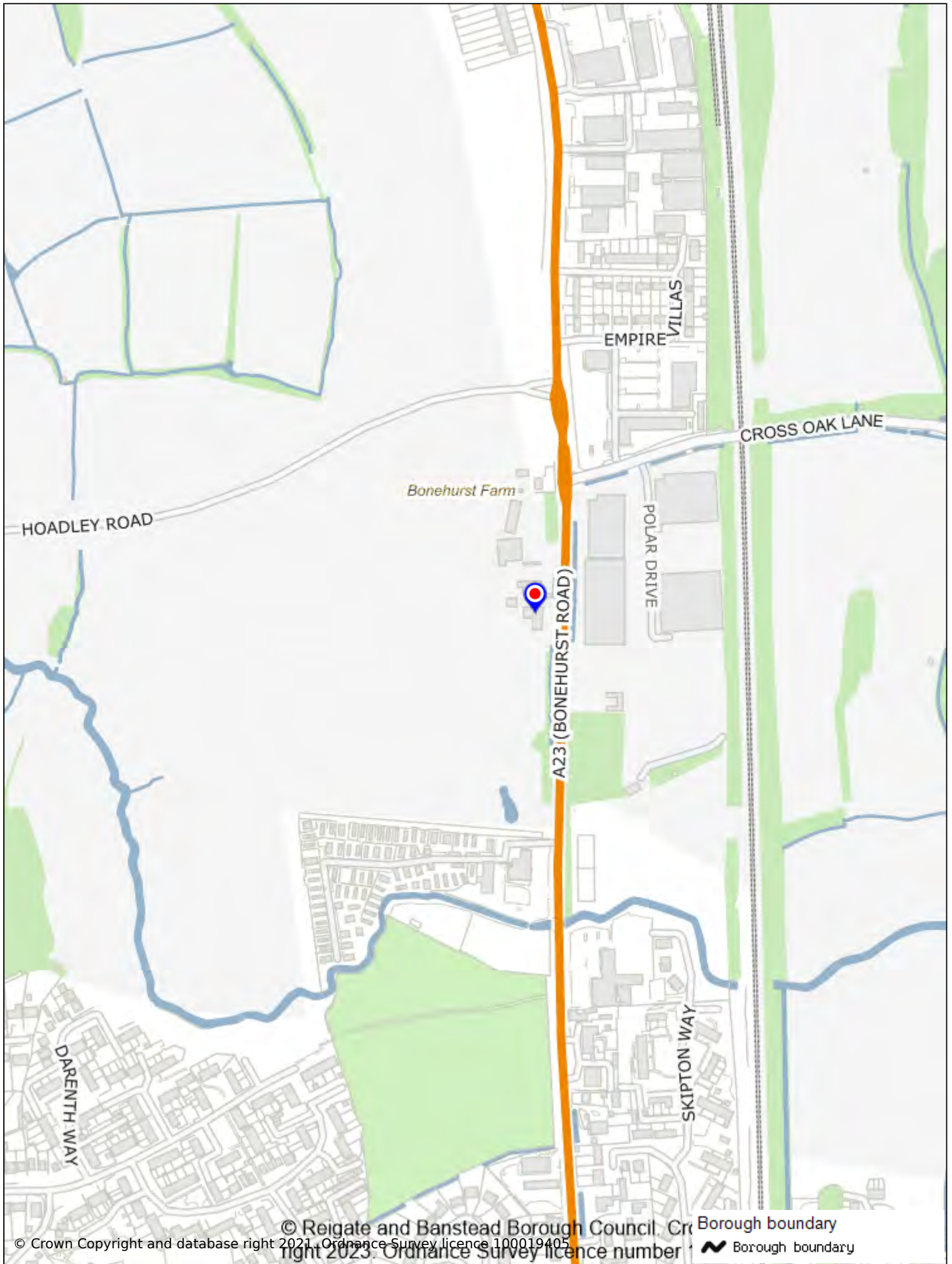


21/00720/F - Horley Place, 17 Bonehurst Road, Horley







© Reigate and Banstead Borough Council. Crown Copyright and database right 2021. Ordnance Survey licence number 100019405. **Borough boundary**

© Crown Copyright and database right 2021. Ordnance Survey licence number 100019405.

**Title**

Scale: 1:5000

User: MarshHol@reigate-banstead.gov.uk Date: 2023-03-07 09:29:04



N Castlefield Road  
Reigate  
Surrey  
RH2 0SH













PROTECCIÓN  
DE LA SEGURIDAD  
DEL TRÁFICO

LAWSON'S  
NURSERY



SONS

Building &  
ng Supplies

THE PUBLIC & TRADE  
7:00am - 4:00pm  
8:00am - 12:00pm  
8 784459  
sons.co.uk





- NOTES:**
- Contractors must check all dimensions on site. Only figured dimensions are to be worked from. Discrepancies must be reported to the Architect or Engineer before proceeding.
  - subject to site survey, confirmation of legal boundaries, site constraints & highways.
  - The Harris Group does not accept any liability for any deviation to our drawings or specification.
  - This drawing has been based on the following consultants drawings: JPP topographical survey, Barrell tree detail information, Vector Landscape Designers, Connect Highways : JPP 21842Y\_01A (2d) Barrell 20161-4 16443-VL\_L01K - Landscape Plan Connect: 20127 - SK22101.1
  - © This drawing is copyright

**ALDI FOOD STORE:**

GROUND FLOOR	
proposed	1865m <sup>2</sup> (GEA)
proposed	1804m <sup>2</sup> (GIA)
retail area	1315m <sup>2</sup>
warehouse	340m <sup>2</sup>
amenity area	121.5m <sup>2</sup>
lobby	17.5m <sup>2</sup>
wall and circulation	10m <sup>2</sup>

EXTERNAL AREAS:	
parking aisles	6m & 7m
parking spaces	2.5m x 5.0m
98 customer parking spaces	
inc. 6dda, 7p&c & 4 ev (+16 passive EV)	

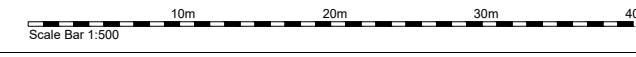
- KEY:**
- site area (red line) 2.41 acres; 0.98 hectares
  - existing trees to be retained
  - TPO trees to be retained
  - proposed trees
  - proposed landscape
  - proposed Tree Root Protection parking spaces

Rev	Date	Description	Rev By	Chk'd By
W	19.10.2022	revised arboricultural overlay and revised landscape	ERJ	ROD
V	12.10.2022	extended footpath following safety audit comments	ERJ	ROD
U	12.10.2022	amendment to junction details as per CC drawing 20127-SK220902.1	ERJ	ROD
M	10.06.2021	standard parking removed from front area, additional highways works incorporated	ERJ	ROD
L	10.06.2021	standard parking removed from front area, additional highways works incorporated	ERJ	ROD



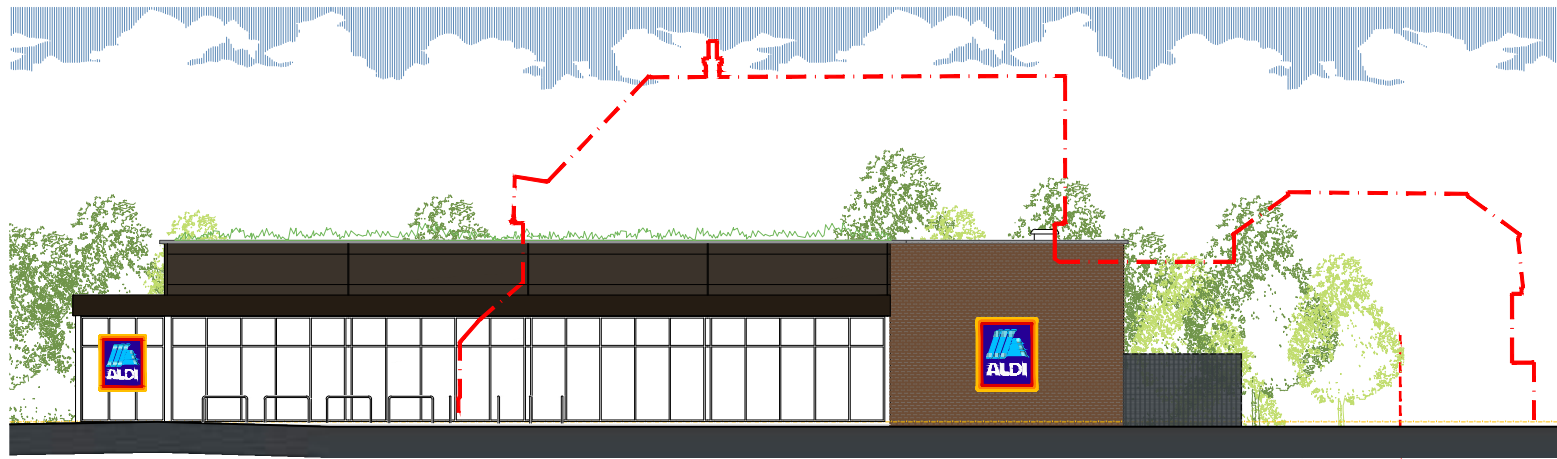
Project Title	PROPOSED ALDI FOODSTORE			
	BONEHURST ROAD HORLEY RH6 8PP			
Client	ALDI STORES LIMITED   SHEPPEY			
Status	PLANNING			
Scale	1:500	Drawing Size	A3	
Date	09-10-2020	Drawn By	ERJ	Checked ROD
Drawing Title	PROPOSED SITE LAYOUT			
Job-Dwg No	16443_111	Rev	W	

- 2 St. Johns North, Wakefield, WF1 3QA t. 01924 291800
- Carvers Warehouse, 77 Dale Street, Manchester, M1 2HG t. 0161 2388555
- The Old Rectory, 79 High Street, Newport Pagnell, MK16 8AB t. 01908 211377
- 101 London Road, Reading, RG1 5BY t. 0118 9507700
- 10 Gees Court, 51 Christophers Place, London, W1U 1JJ t. 0207 4091215



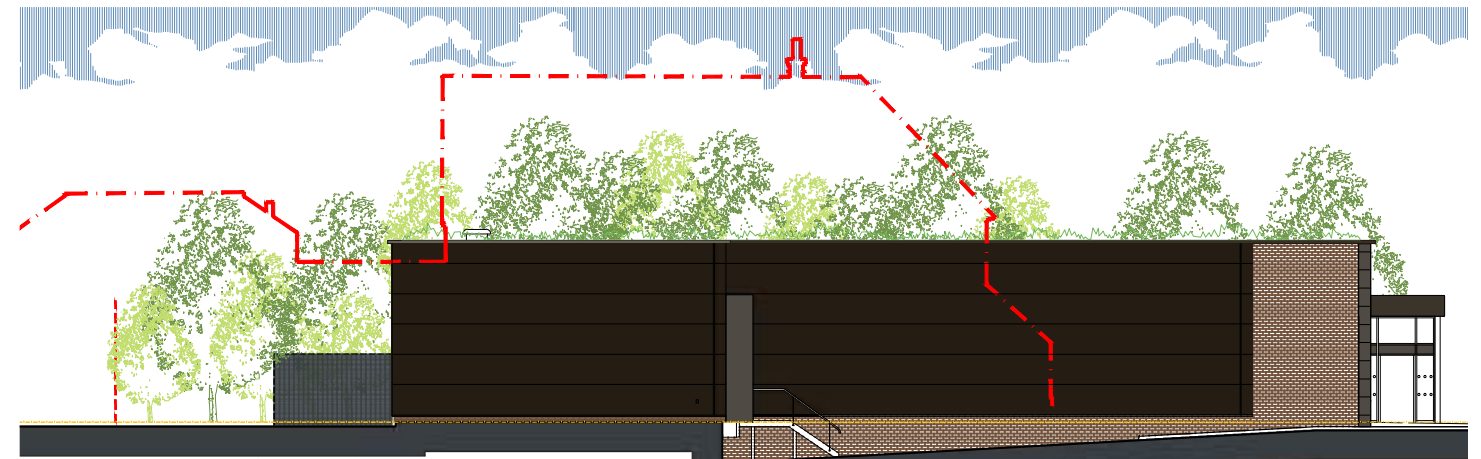
NOTES:

1. subject to site survey, confirmation of legal boundaries, site constraints & highways.
2. The Harris Group does not accept any liability for any deviation to our drawings or specification.
3. This drawing has been based on Ordnance Survey Mapping.
4. © This drawing is copyright



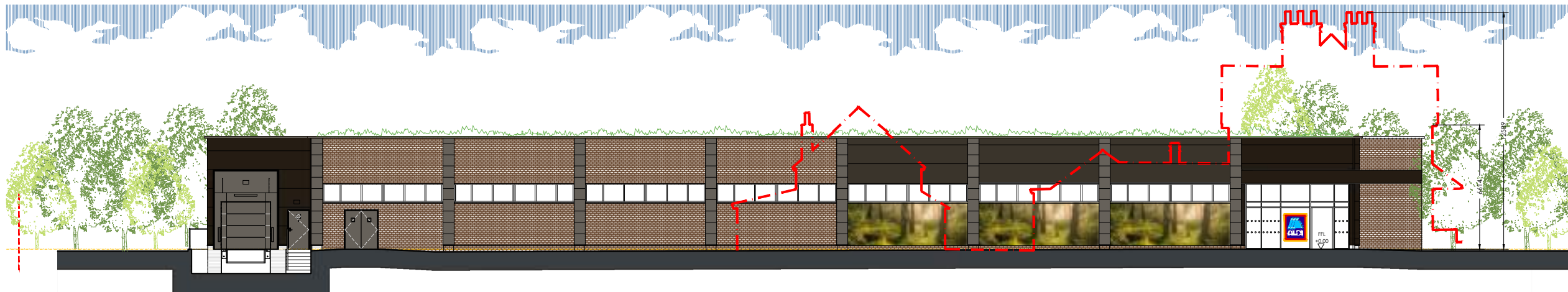
01: EAST ELEVATION | BONEHURST ROAD

scale 1:250



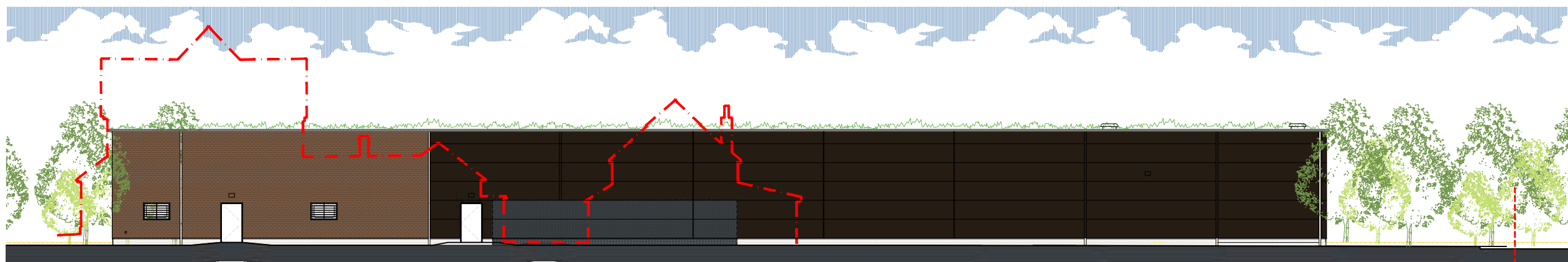
02: WEST ELEVATION

scale 1:250



03: SOUTH ELEVATION

scale 1:250



04: NORTH ELEVATION

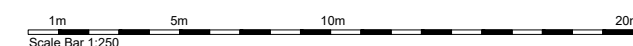
scale 1:250

Rev	Date	Description	Rev By	Chk'd By
B	12.10.2022	amendment to store positions, following changes to site layout	ERJ	ROD
A	23.02.2021	removal of brise soleil and cedar cladding	ERJ	ROD



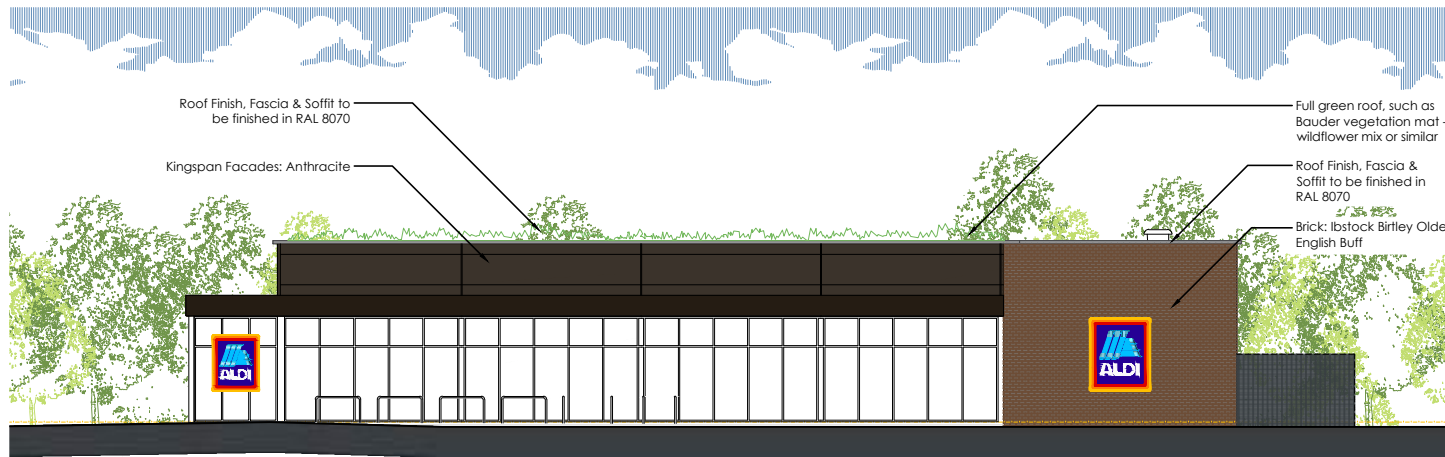
Project Title	PROPOSED ALDI FOODSTORE BONEHURST ROAD HORLEY RH6 8PP			
Client	ALDI STORES LIMITED   SHEPPEY			
Status	PLANNING			
Scale	1:250	Drawing Size	A3	
Date	17-02-2021	Drawn By	ERJ	Checked ROD
Drawing Title	PROPOSED ELEVATIONS   OVERLAY			
Job-Dwg No	16443_115	Rev	B	

- 2 St. Johns North, Wakefield, WF1 3QA t. 01924 291800
- Carvers Warehouse, 77 Dale Street, Manchester, M1 2HG t. 0161 2388555
- The Old Rectory, 79 High Street, Newport Pagnell, MK16 8AB t. 01908 211377
- 101 London Road, Reading, RG1 5BY t. 0118 9507700
- 10 Gees Court, 31 Christophers Place, London, W1U 1JJ t. 0207 4091215

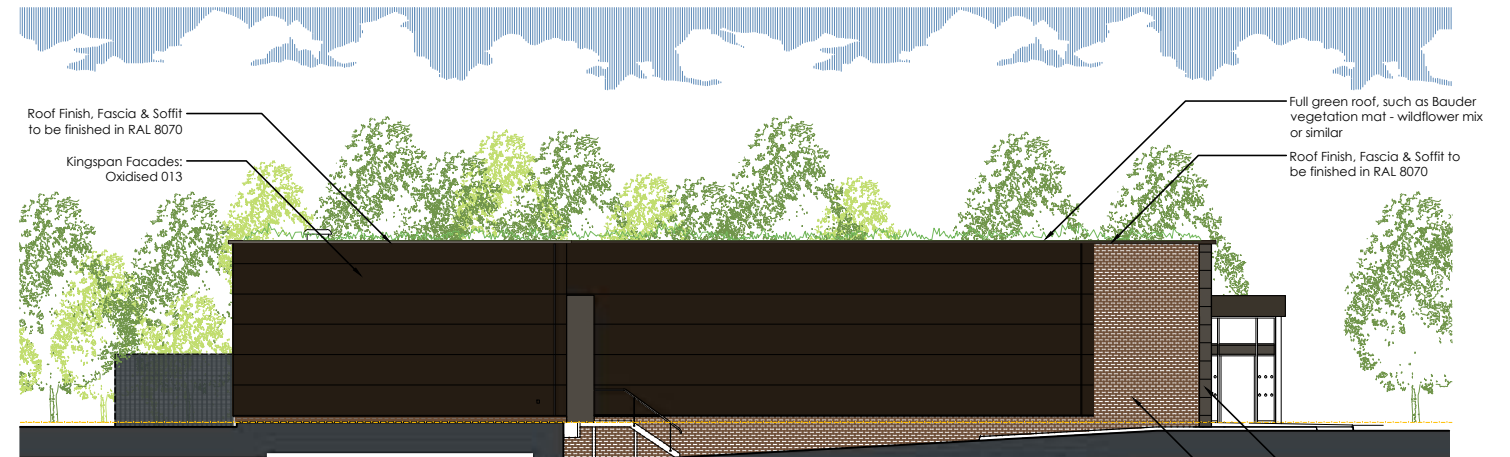


NOTES:

1. subject to site survey, confirmation of legal boundaries, site constraints & highways.
2. The Harris Group does not accept any liability for any deviation to our drawings or specification.
3. This drawing has been based on Ordnance Survey Mapping.
4. © This drawing is copyright



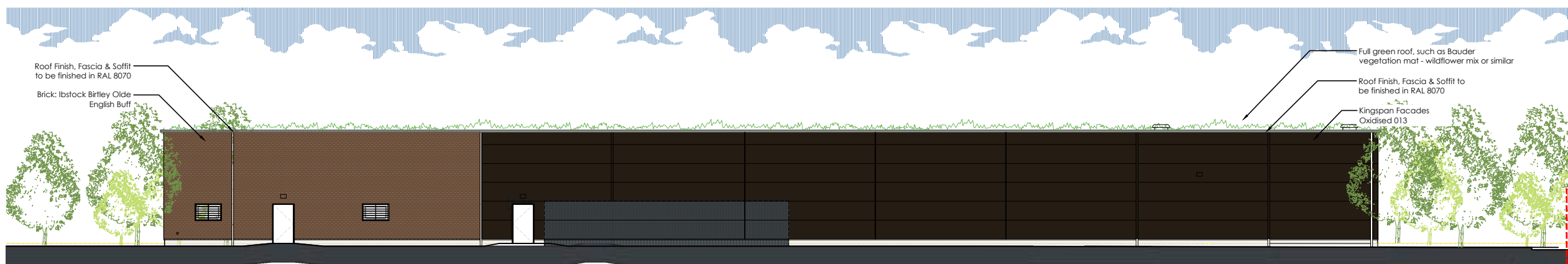
01: EAST ELEVATION | BONEHURST ROAD  
scale 1:250



02: WEST ELEVATION  
scale 1:250



03: SOUTH ELEVATION  
scale 1:250



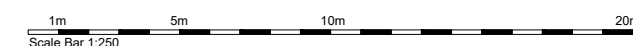
04: NORTH ELEVATION  
scale 1:250

Rev	Date	Description	Rev By	Chk'd By
J	12.10.2022	amendments to elevations following site layout changes	ERJ	ROD
F	08.01.2021	revised numbering	ERJ	ROD
E	05.01.2021	revised front elevation	ERJ	ROD
D	05.01.2021	roof redesign - flat roof and parapet	ERJ	ROD
C	15.12.2020	roof redesign and green roof	ERJ	ROD
B	19.10.2020	removal of perforated vinyl text and change to vinyl	ERJ	ROD



Project Title	PROPOSED ALDI FOODSTORE		
	BONEHURST ROAD HORLEY RH6 8PP		
Client	ALDI STORES LIMITED   SHEPPEY		
Status	PLANNING		
Scale	1:250	Drawing Size	A3
Date	07-10-2020	Drawn By	ERJ
		Checked	ROD
Drawing Title	PROPOSED ELEVATIONS		
Job-Dwg No	16443_114	Rev	J

- 2 St. Johns North, Wakefield, WF1 3QA t. 01924 291800
- Carvers Warehouse, 77 Dale Street, Manchester, M1 2HG t. 0161 2388555
- The Old Rectory, 79 High Street, Newport Pagnell, MK16 8AB t. 01908 211377
- 101 London Road, Reading, RG1 5BY t. 0118 9507700
- 10 Gees Court, St Christophers Place, London, W1U 1JJ t. 0207 4091215



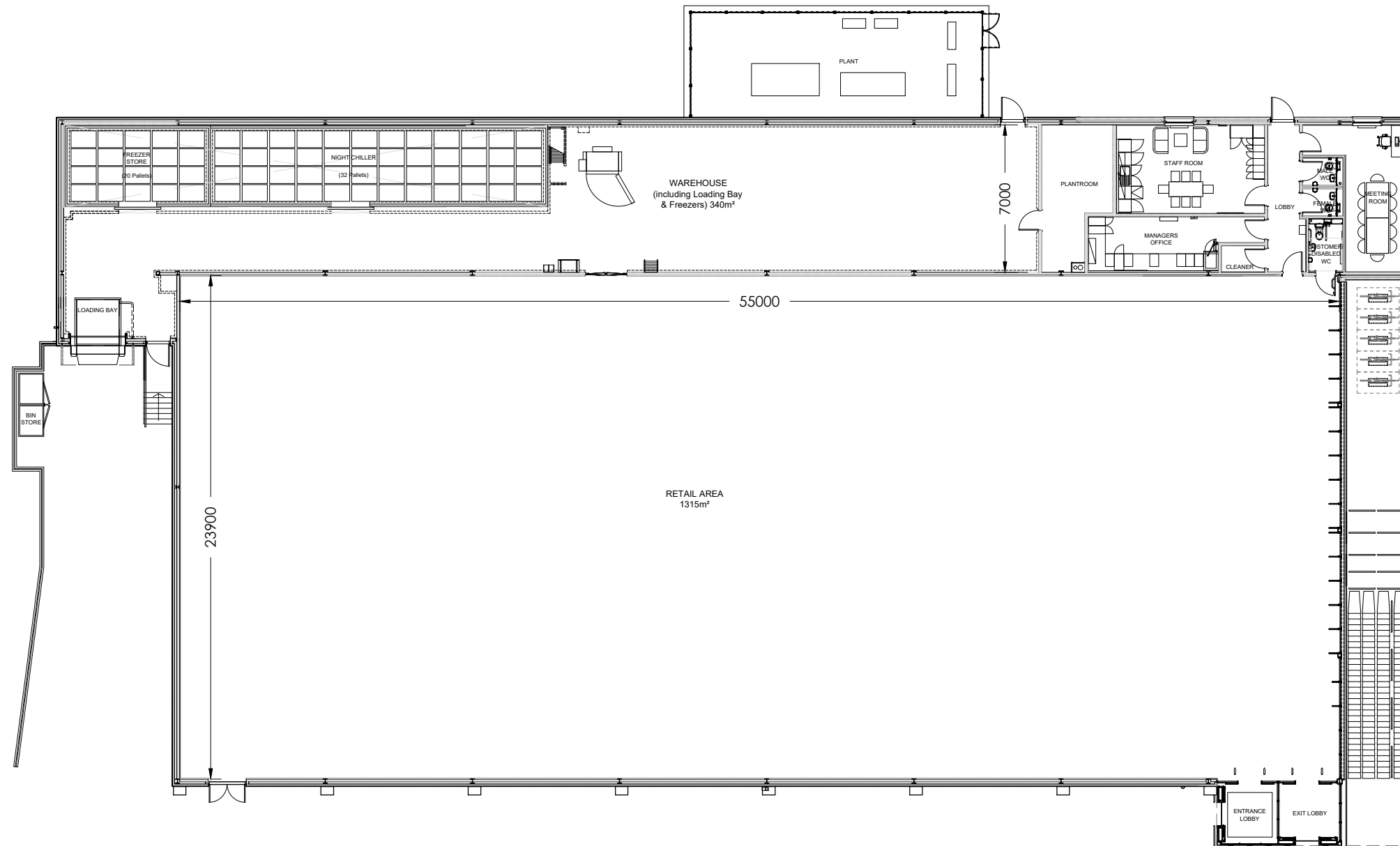


NOTES:

- Contractors must check all dimensions on site. Only figured dimensions are to be worked from. Discrepancies must be reported to the Architect or Engineer before proceeding.
- subject to site survey, confirmation of legal boundaries, site constraints & highways.
- The Harris Group does not accept any liability for any deviation to our drawings or specification.
- This drawing has been based on Ordnance Survey Mapping.
- © This drawing is copyright

ALDI FOOD STORE:

GROUND FLOOR	
proposed	1865m <sup>2</sup> (GEA)
proposed	1804m <sup>2</sup> (GIA)
retail area	1315m <sup>2</sup>
warehouse	340m <sup>2</sup>
amenity area	121.5m <sup>2</sup>
lobby	17.5m <sup>2</sup>
wall and circulation	10m <sup>2</sup>



Rev	Date	Description	Rev By	Chk'd By
E	12.10.2022	amended layout to suit revised site layout	ERJ	ROD
D	23.02.2021	amended layout to suit ASL request	ERJ	ROD
C	08.01.2021	updated chiller size	ERJ	ROD
B	05.01.2021	revised canopy details	ERJ	ROD
A	03.12.2020	plant and MOE door from warehouse repositioned. sheet number changed.	ERJ	ROD

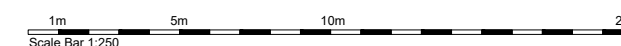


Project Title	PROPOSED ALDI FOODSTORE		
	BONEHURST ROAD HORLEY RH6 8PP		
Client	ALDI STORES LIMITED   SHEPPEY		
Status	PLANNING		
Scale	1:250	Drawing Size	A3
Date	09-10-2020	Drawn By	ERJ
		Checked	ROD
Drawing Title	PROPOSED STORE PLAN		
Job-Dwg No	16443_113	Rev	E

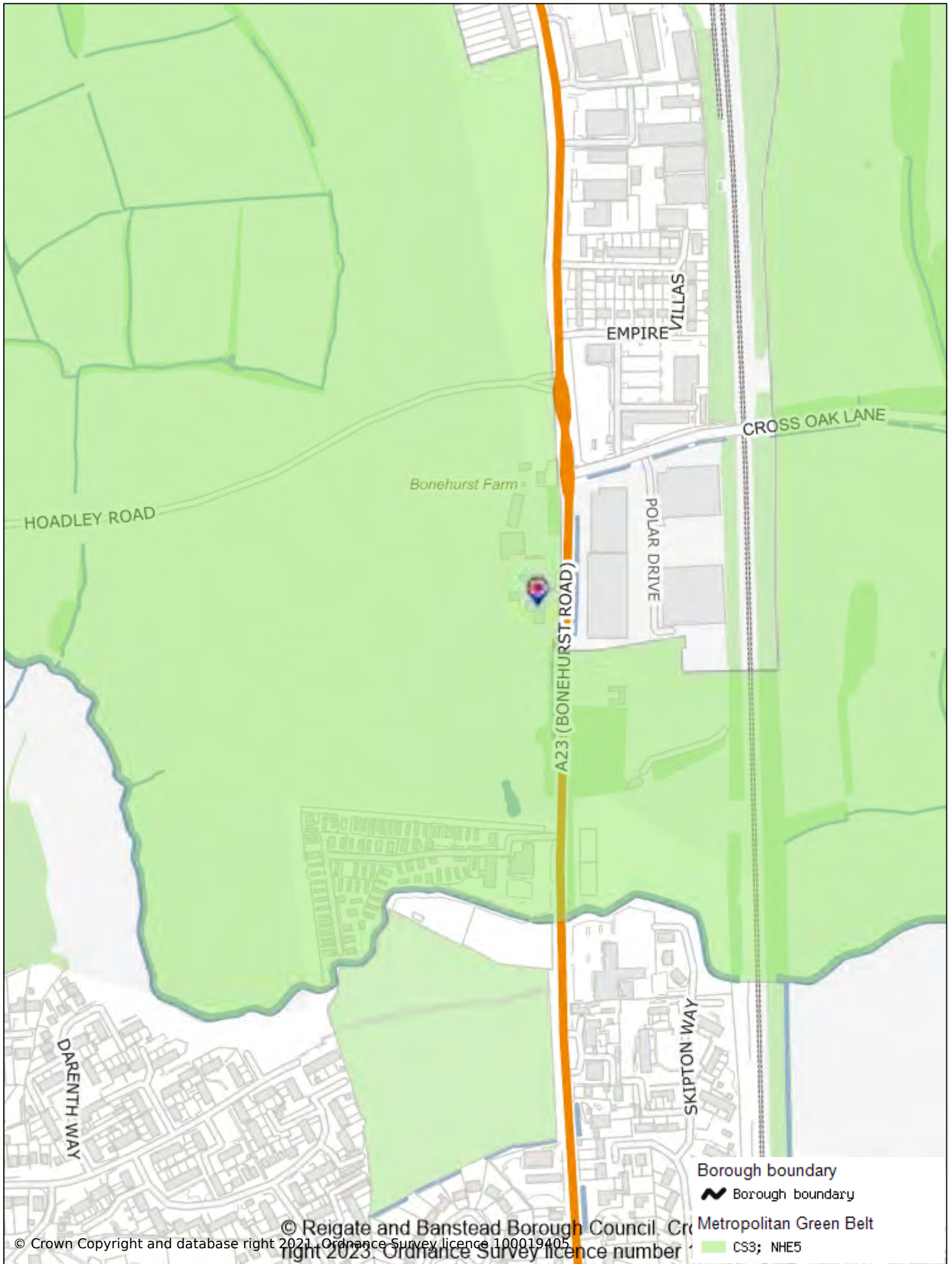
- 2 St. Johns North, Wakefield, WF1 3QA t. 01924 291800
- Carvers Warehouse, 77 Dale Street, Manchester, M1 2HG t. 0161 2388555
- The Old Rectory, 79 High Street, Newport Pagnell, MK16 8AB t. 01908 211377
- 101 London Road, Reading, RG1 5BY t. 0118 9507700
- 10 Gees Court, St Christophers Place, London, W1U 1JJ t. 0207 4091215



www.harrispartnership.com



This drawing is copyright and may not be reproduced in whole or part without written authority. Do not scale off this drawing.



© Reigate and Banstead Borough Council. Crown Copyright and database right 2021. Ordnance Survey licence number 100019405. Right 2023. Ordnance Survey licence number 100019405.

**Title**

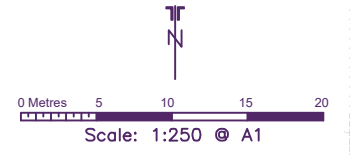
Scale: 1:5000

User: MarshHol@reigate-banstead.gov.uk Date: 2023-03-07 09:31:41



N Castlefield Road  
Reigate  
Surrey  
RH2 0SH





- NOTES:**
- Contractors must check all dimensions on site. Only figured dimensions are to be worked from. Discrepancies must be reported to the Architect or Engineer before proceeding.
  - subject to site survey, confirmation of legal boundaries, site constraints & highways.
  - The Harris Group does not accept any liability for any deviation to our drawings or specification.
  - This drawing has been based on the following consultants drawings: JPP topographical survey, Barrell tree detail information, Vector Landscape Designers, Connect Highways: JPP 21842Y\_01A (2d) Barrell 20161-4 16443-VL\_L01K - Landscape Plan Connect: 20127 - SK22101.1
  - © This drawing is copyright

**ALDI FOOD STORE:**

GROUND FLOOR	
proposed	1865m <sup>2</sup> (GEA)
proposed	1804m <sup>2</sup> (GIA)
retail area	1315m <sup>2</sup>
warehouse	340m <sup>2</sup>
amenity area	121.5m <sup>2</sup>
lobby	17.5m <sup>2</sup>
wall and circulation	10m <sup>2</sup>

EXTERNAL AREAS:	
parking aisles	6m & 7m
parking spaces	2.5m x 5.0m
98 customer parking spaces	
inc. 6dda, 7p&c & 4 ev (+16 passive EV)	

- KEY:**
- site area (red line) 2.41 acres; 0.98 hectares
  - existing trees to be retained
  - TPO trees to be retained
  - TPO trees to be removed (subject to approval)
  - Category A trees to be removed (subject to approval)
  - existing trees
  - proposed trees
  - proposed landscape
  - proposed Tree Root Protection parking spaces

W	U	V	M	L
19.10.2022	12.10.2022	12.10.2022	10.06.2021	10.06.2021
revised arboricultural overlay and revised landscape	extended footpath following safety audit comments	amendment to junction details as per CC drawing 20127-SK220902.1	standard parking removed from front area.	additional highways works incorporated
ERJ	ERJ	ERJ	ERJ	ERJ
ROD	ROD	ROD	ROD	ROD
Rev	Date	Description	Rev By	Chk'd By



Project Title	PROPOSED ALDI FOODSTORE		
	BONEHURST ROAD HORLEY RH6 8PP		
Client	ALDI STORES LIMITED   SHEPPEY		
Status	PLANNING		
Scale	1:500	Drawing Size	A3
Date	09-10-2020	Drawn By	ERJ
		Checked	ROD

Drawing Title	PROPOSED SITE LAYOUT   DEMOLITIONS		
Job-Dwg No	16443_110	Rev	W

- 2 St. Johns North, Wakefield, WF1 3QA t. 01924 291800
- Carvers Warehouse, 77 Dale Street, Manchester, M1 2HG t. 0161 2388555
- The Old Rectory, 79 High Street, Newport Pagnell, MK16 8AB t. 01908 211377
- 101 London Road, Reading, RG1 5BY t. 0118 9507700
- 10 Gees Court, 31 Christophers Place, London, W1U 1JJ t. 0207 4091215











- NOTES:**
- Contractors must check all dimensions on site. Only figured dimensions are to be worked from. Discrepancies must be reported to the Architect or Engineer before proceeding.
  - subject to site survey, confirmation of legal boundaries, site constraints & highways.
  - The Harris Group does not accept any liability for any deviation to our drawings or specification.
  - This drawing has been based on the following consultants drawings: JPP topographical survey, Barrell tree detail information, Vector Landscape Designers, Connect Highways : JPP 21842Y\_01A (2d) Barrell 20161-4 16443-VL\_L01K - Landscape Plan Connect: 20127 - SK22101.1
  - © This drawing is copyright

**ALDI FOOD STORE:**

GROUND FLOOR	
proposed	1865m <sup>2</sup> (GEA)
proposed	1804m <sup>2</sup> (GIA)
retail area	1315m <sup>2</sup>
warehouse	340m <sup>2</sup>
amenity area	121.5m <sup>2</sup>
lobby	17.5m <sup>2</sup>
wall and circulation	10m <sup>2</sup>

EXTERNAL AREAS:	
parking aisles	6m & 7m
parking spaces	2.5m x 5.0m
98 customer parking spaces	
inc. 6dda, 7p&c & 4 ev (+16 passive EV)	

- KEY:**
- site area (red line) 2.41 acres; 0.98 hectares
  - existing trees to be retained
  - TPO trees to be retained
  - proposed trees
  - proposed landscape
  - proposed Tree Root Protection parking spaces

Rev	Date	Description	Rev By	Chk'd By
W	19.10.2022	revised arboricultural overlay and revised landscape	ERJ	ROD
V	12.10.2022	extended footpath following safety audit comments	ERJ	ROD
U	12.10.2022	amendment to junction details as per CC drawing 20127-SK220902.1	ERJ	ROD
M	10.06.2021	standard parking removed from front area, additional highways works incorporated	ERJ	ROD
L	10.06.2021	standard parking removed from front area, additional highways works incorporated	ERJ	ROD



Project Title	PROPOSED ALDI FOODSTORE			
	BONEHURST ROAD HORLEY RH6 8PP			
Client	ALDI STORES LIMITED   SHEPPEY			
Status	PLANNING			
Scale	1:500	Drawing Size	A3	
Date	09-10-2020	Drawn By	ERJ	Checked ROD
Drawing Title	PROPOSED SITE LAYOUT			
Job-Dwg No	16443_111	Rev	W	

- 2 St. Johns North, Wakefield, WF1 3QA t. 01924 291800
- Carvers Warehouse, 77 Dale Street, Manchester, M1 2HG t. 0161 2388555
- The Old Rectory, 79 High Street, Newport Pagnell, MK16 8AB t. 01908 211377
- 101 London Road, Reading, RG1 5BY t. 0118 9507700
- 10 Gees Court, 51 Christophers Place, London, W1U 1JJ t. 0207 4091215

